



End of the Year Goal Progress Report
June 2022

Stacy Bailey
Assistant Superintendent of Instruction

* BENCHMARK ASSESSMENTS

Fastbridge Assessments (Fall, Winter, Spring)

- Early Reading Skills and aReading
- Early Math Skills and aMath
- mySAEBRS (my Social Academic Emotional Behavior Risk Screener)

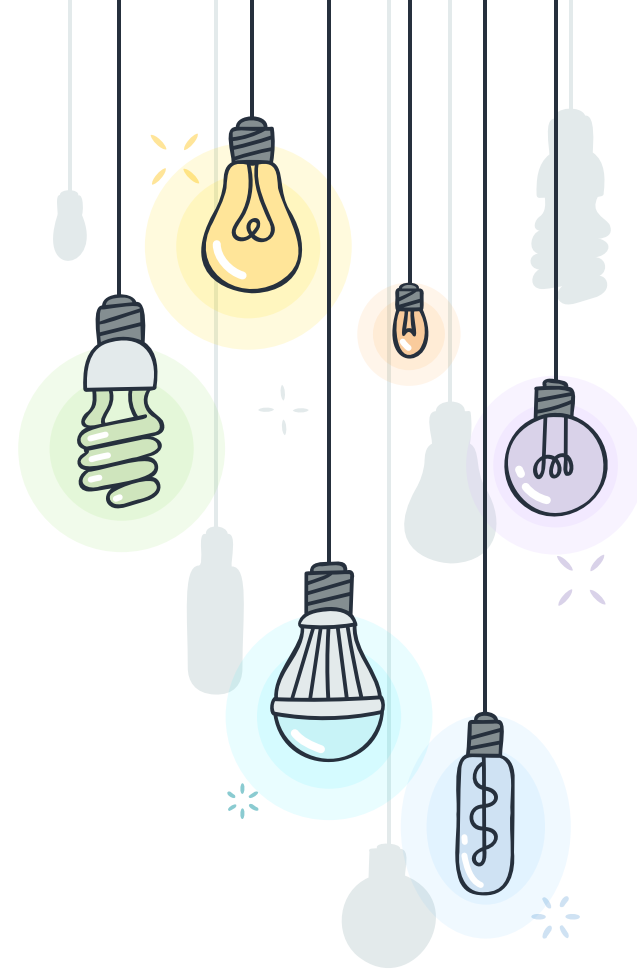
For the 2021-22 school year, the Michigan Legislature requires Benchmark Assessment Goals & Reporting:

- All districts must complete benchmark assessments in reading and math.
- All districts must submit mid-year and end-of-year goals.
- All districts must report out on mid-year and end-of-year goals.



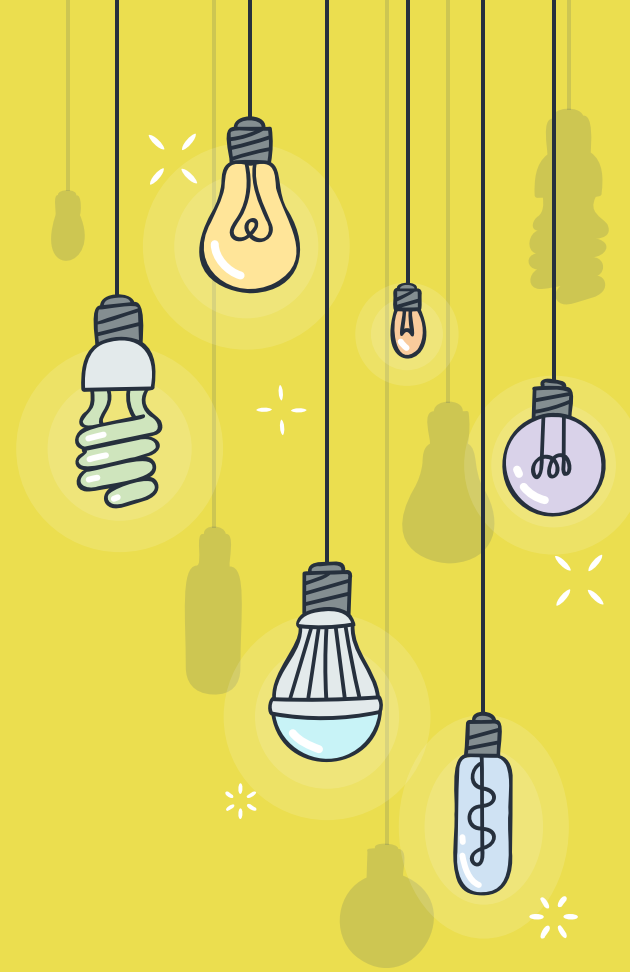
* OVERVIEW

- ❖ Literacy Goal
 - Data set by grade level
 - Data set by demographic reporting groups
- ❖ Mathematics Goal
 - Data set by grade level
 - Data set by demographic reporting groups
- ❖ SEL Goal
 - Data set by grade band and demographic reporting groups
- ❖ Next Steps



“ What makes a child gifted and talented may not always be good grades in school, but a different way of looking at the world and learning.

—Chuck Grassley



1

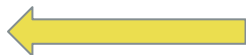
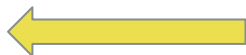
LITERACY PROFICIENCY

Mid-Year Goal- 80% of K-8 students will demonstrate proficiency in Reading/ELA as measured by Fastbridge assessments.

End-of-Year Goal- 85% of K-8 students will demonstrate proficiency in Reading/ELA as measured by Fastbridge assessments.

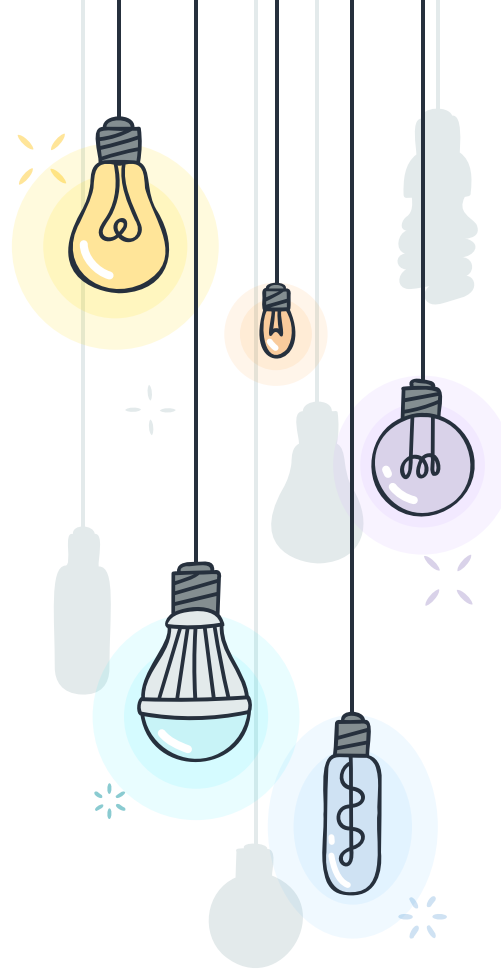


ELA	Fall	Winter	Spring
ALL Students	75%	71%	70%
Kindergarten	77%	55%	46%
First Grade	63%	60%	61%
Second Grade	69%	68%	69%
Third Grade	70%	69%	66%
Fourth Grade	78%	73%	75%
Fifth Grade	78%	78%	75%
Sixth Grade	74%	75%	85%
Seventh Grade	79%	80%	84%
Eighth Grade	82%	81%	77%



~2 grades showed a **growth opportunity gap** as compared to other grades (>10% from the district average)

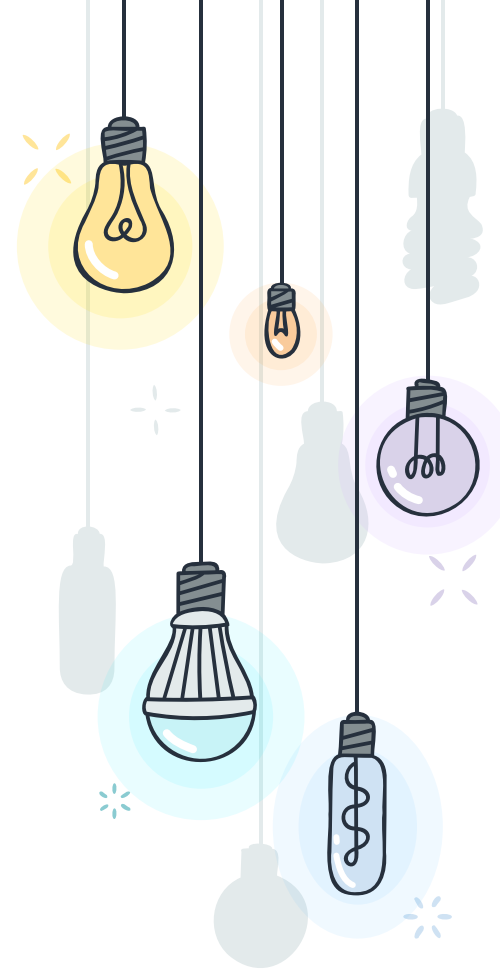
~1 grade levels **met the end of year goal** of 85%



ELA	Fall	Winter	Spring
ALL Students	75%	71%	70%
Economically Disadvantaged	57%	54%	54%
Special Education	35%	33%	34%
English Learner	60%	54%	54%
American Indian or Alaska Native	NA	NA	NA
Asian American	83%	78%	79%
Black or African American	59%	53%	53%
Native Hawaiian or Other Pacific Islander	NA	NA	NA
White	75%	72%	71%
Hispanic or Latino	59%	57%	60%
Two or More Races	67%	63%	62%



~4 groups showed a **growth opportunity gap** as compared to other groups (>10%)



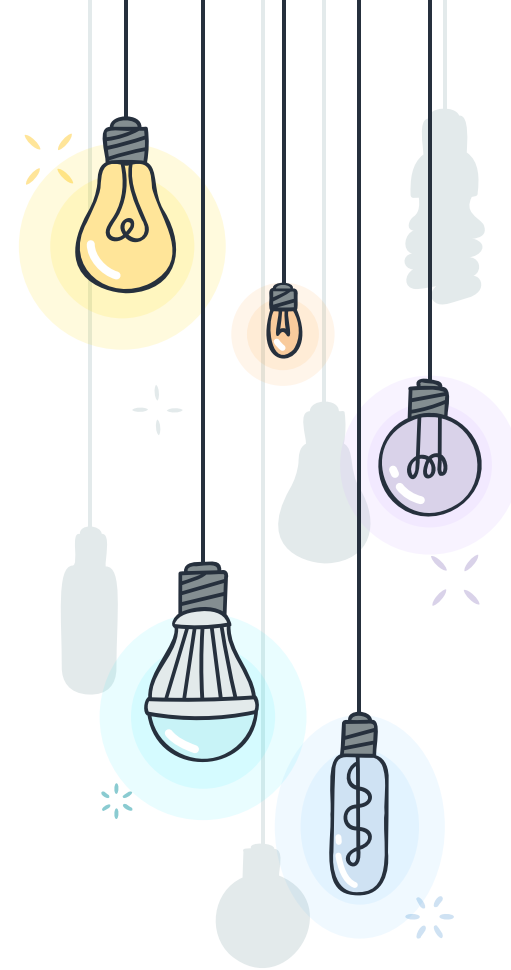
2

MATHEMATICS PROFICIENCY

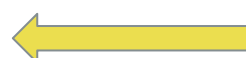
Mid-Year Goal- 80% of K-8 students will demonstrate proficiency in Mathematics as measured by Fastbridge assessments.

End-of-Year Goal- 85% of K-8 students will demonstrate proficiency in Mathematics as measured by Fastbridge assessments.

Math	Fall	Winter	Spring
ALL Students	82%	77%	76%
Kindergarten	87%	74%	71%
First Grade	82%	74%	73%
Second Grade	76%	75%	74%
Third Grade	84%	82%	81%
Fourth Grade	80%	82%	83%
Fifth Grade	83%	76%	73%
Sixth Grade	88%	74%	78%
Seventh Grade	77%	78%	76%
Eighth Grade	80%	82%	83%

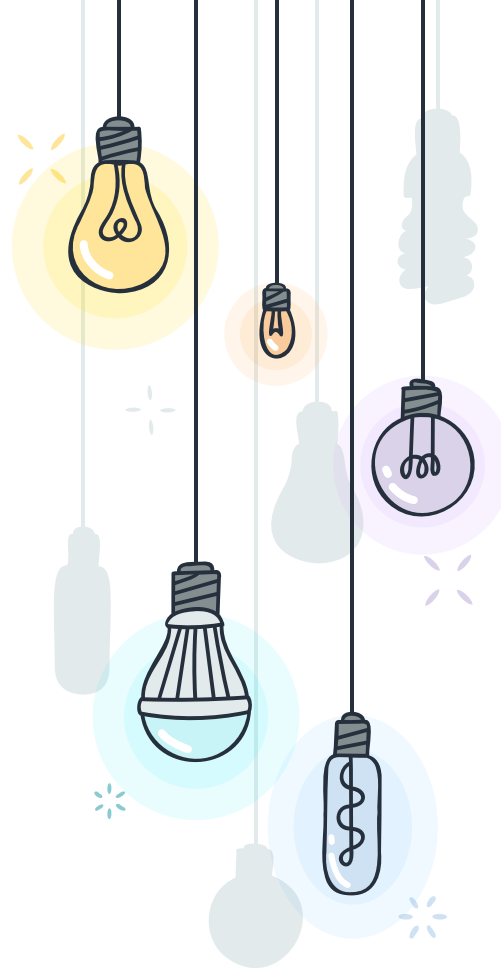


Math	Fall	Winter	Spring
ALL Students	82%	77%	76%
Economically Disadvantaged	62%	58%	55%
Special Education	40%	39%	35%
English Learner	68%	62%	64%
American Indian or Alaska Native	NA	NA	NA
Asian American	89%	84%	86%
Black or African American	53%	50%	49%
Native Hawaiian or Other Pacific Islander	NA	NA	NA
White	85%	80%	77%
Hispanic or Latino	60%	58%	57%
Two or More Races	72%	70%	69%



~5 groups showed a **growth opportunity gap** as compared to other groups (>10%)

~1 group **met end of year goal** of 85%



3

SOCIAL EMOTIONAL LEARNING

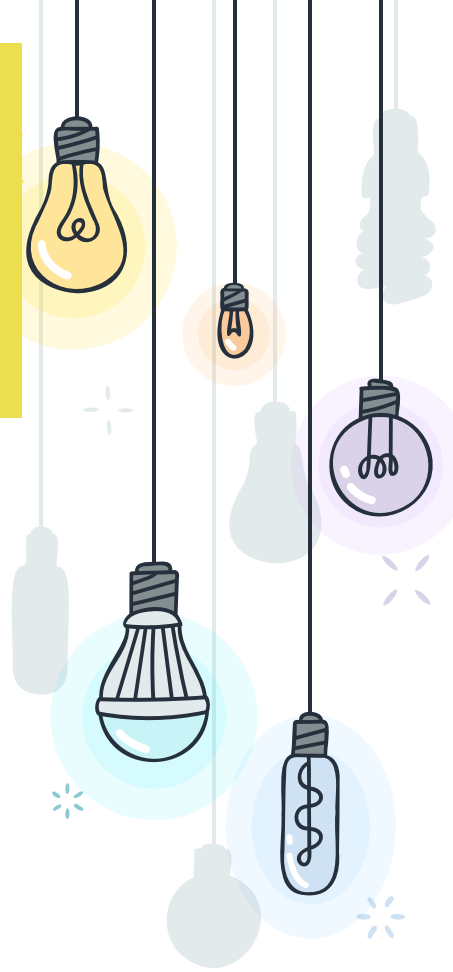
Mid-Year Goal- 80% of 2-12 students will demonstrate healthy social, emotional, and academic behaviors as measured by Fastbridge

End-of-Year Goal- 85% of 2-12 students will demonstrate healthy social, emotional, and academic behaviors as measured by Fastbridge

SEL 2nd-4th Grades	Fall	Winter	Spring
ALL Students	84%	87%	87%
Econ. Disadvantaged	65%	81%	63%
Special Education	80%	78%	72%
English Learner	83%	80%	86%
American Indian or Alaska Native	NA	NA	NA
Asian American	89%	90%	87%
Black or African American	85%	84%	84%
Native Hawaiian or Other Pacific Islander	NA	NA	NA
White	83%	88%	88%
Hispanic or Latino	77%	88%	86%
Two or More Races	84%	81%	86%

~2 groups showed a **growth opportunity gap** as compared to other groups (>10%)

~5 groups **met the end of year goal** of 85%



SEL 5th-8th Grades	Fall	Winter	Spring
ALL Students	89%	89%	88%
Econ. Disadvantaged	83%	84%	82%
Special Education	68%	71%	67%
English Learner	87%	87%	90%
American Indian or Alaska Native	NA	NA	NA
Asian American	93%	94%	92%
Black or African American	78%	81%	85%
Native Hawaiian or Other Pacific Islander	NA	NA	NA
White	90%	88%	87%
Hispanic or Latino	78%	82%	88%
Two or More Races	85%	86%	86%



~1 group showed a **growth opportunity gap** as compared to other groups (>10%)

~6 groups **met the end of year goal** of 85%

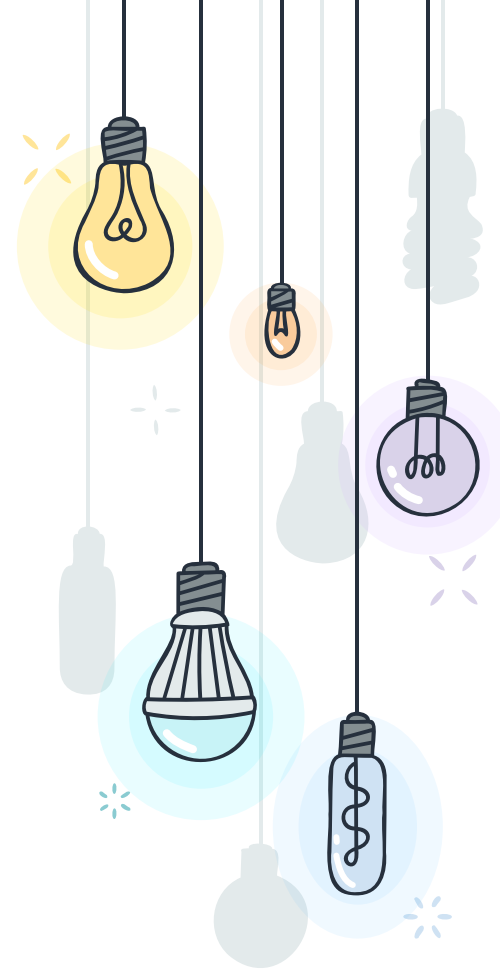


SEL 9th-12th Grades	Fall	Winter	Spring
ALL Students	89%	85%	86%
Econ. Disadvantaged	82%	79%	80%
Special Education	75%	71%	75%
English Learner	92%	93%	100%
American Indian or Alaska Native	NA	NA	NA
Asian American	93%	90%	92%
Black or African American	91%	89%	92%
Native Hawaiian or Other Pacific Islander	NA	NA	NA
White	87%	83%	84%
Hispanic or Latino	84%	70%	NA
Two or More Races	88%	79%	77%



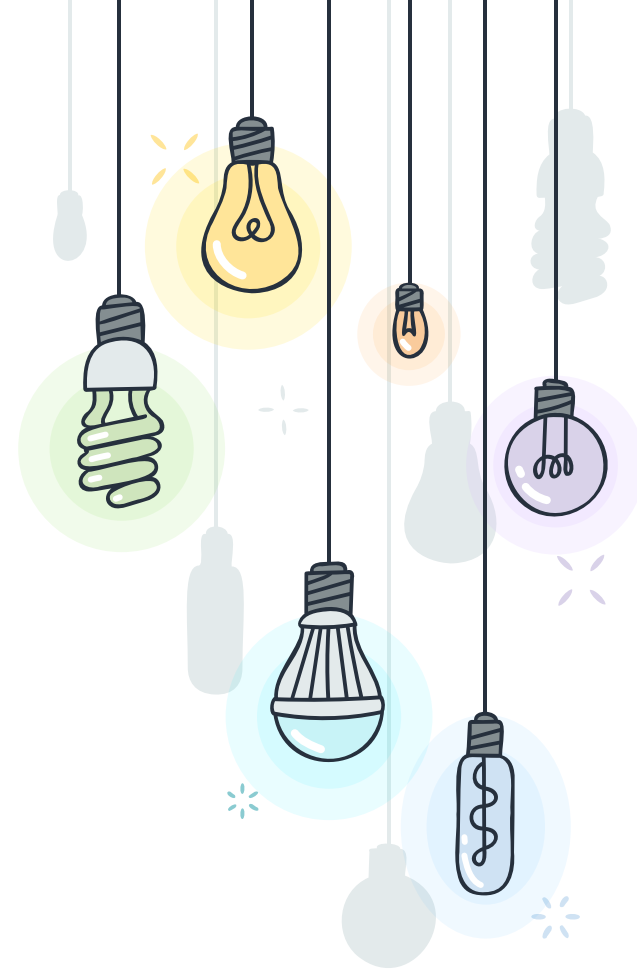
~1 groups showed a **growth opportunity gap** as compared to other groups (>10%)

~3 groups **met the end of year goal** of 85%



✨ OUR NEXT STEPS

- ★ New benchmark assessment tool, NWEA
- ★ Board work session on data & assessment
- ★ Professional targeted learning for staff
- ★ Targeted summer opportunities
- ★ Targeted after school programs



QUESTIONS?

